

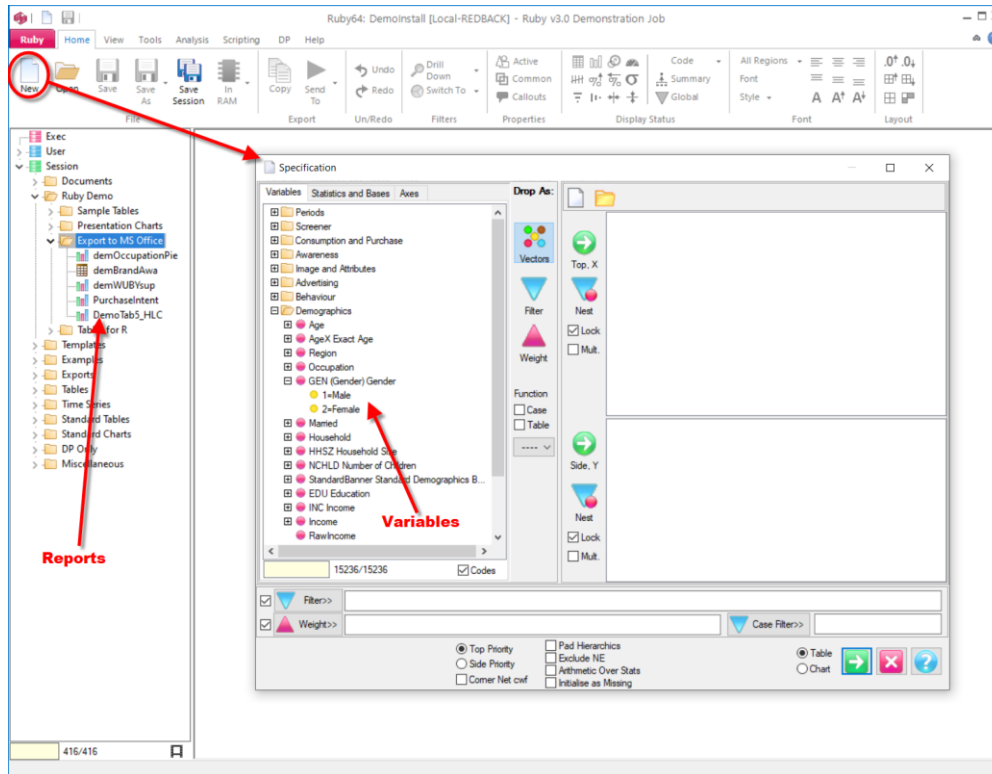


# Ruby Quick Start

<b>OVERVIEW .....</b>	<b>2</b>
<b>GETTING HELP .....</b>	<b>2</b>
The Help Tab.....	2
Dialogs.....	3
Training Videos .....	3
Questions .....	3
<b>THE DEMO JOB .....</b>	<b>3</b>
<b>CLOUD JOBS .....</b>	<b>7</b>

This document is a quick introduction to Ruby.

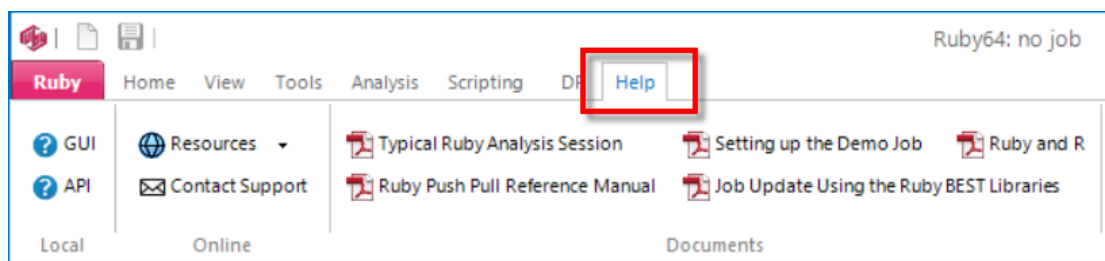
# OVERVIEW



Ruby is a powerful program that begins with crosstabs. The main form has a tree of saved reports (tables, charts, maps) and other documents. The report Specification form has a tree of Variables from which to build reports.

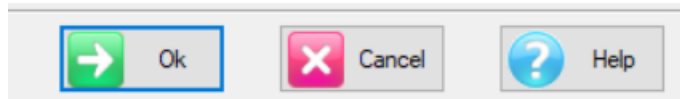
## GETTING HELP

### The Help Tab



The Help tab has many direct documents and website links. The installed help is in two main parts for the GUI and API and there are several specific PDFs including walkthroughs.

## Dialogs



Most dialogs have a Help button that jumps straight to the best spot in the GUI Help.

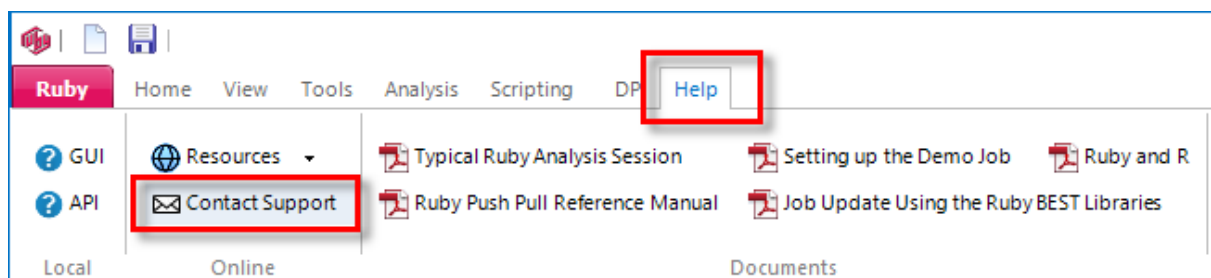
## Training Videos

There are lots of training videos here

<https://www.redcentresoftware.com/training-videos/>

## Questions

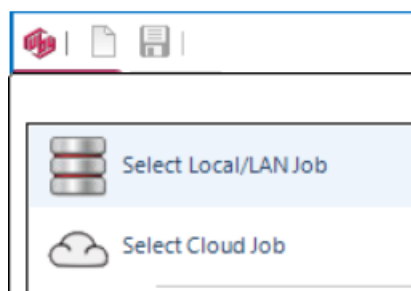
For any questions or issues, send an email from



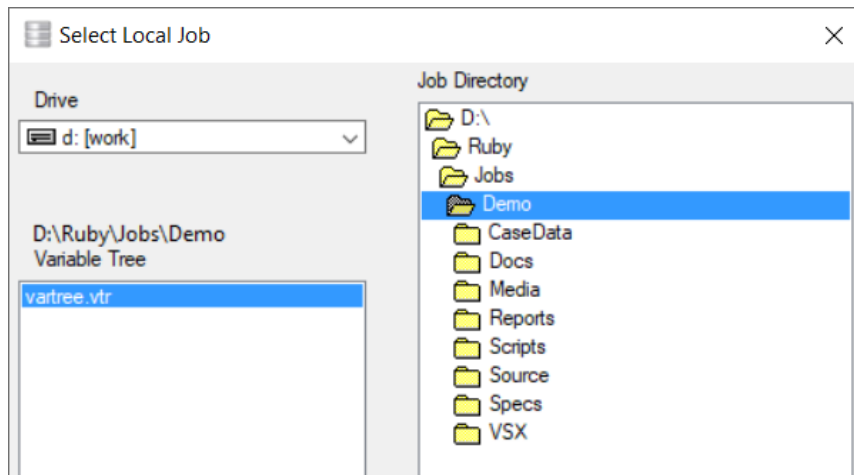
...or send directly to [support@redcentresoftware.com](mailto:support@redcentresoftware.com).

## THE DEMO JOB

The install comes with a number of example jobs and there are others on the Cloud.

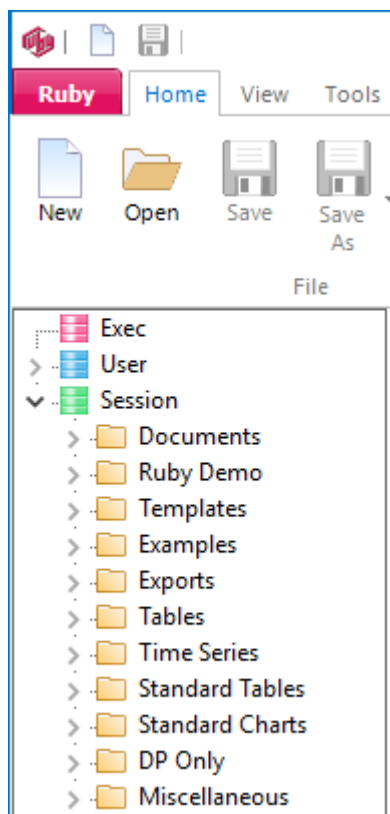


- To select the local version of the Demo job use the main menu *Select Local/LAN Job*.

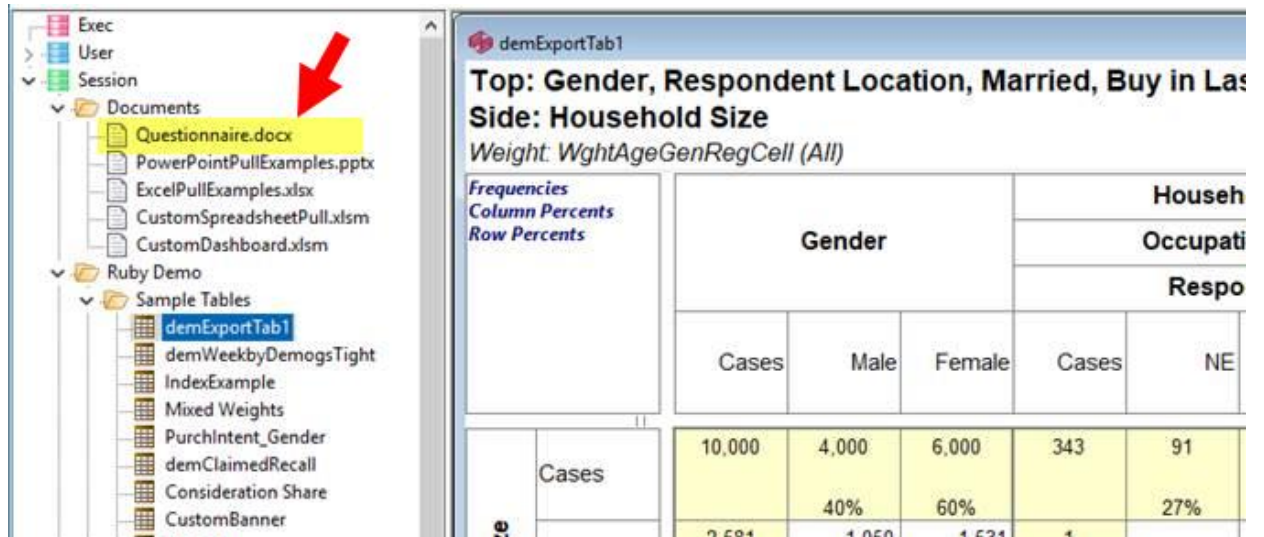


- Navigate to Ruby/Jobs/Demo and click OK

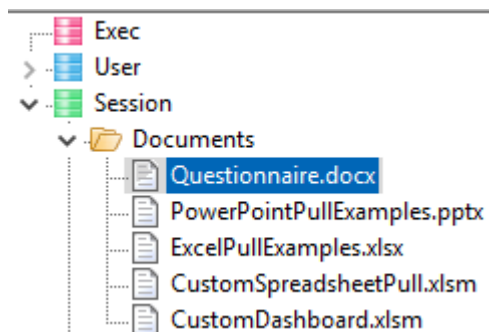
You should see these report folders on the side:



- Double-click a report to open it

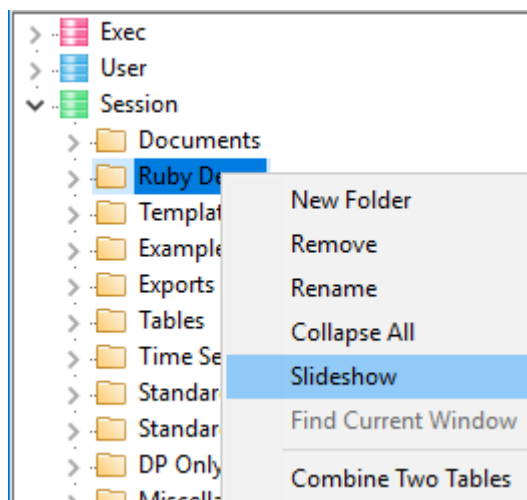


Open Questionnaire.docx (in /Session/Documents) to see the organization of the variables in the Demo job



To view all reports in a folder

- Right click on a folder and select Slideshow



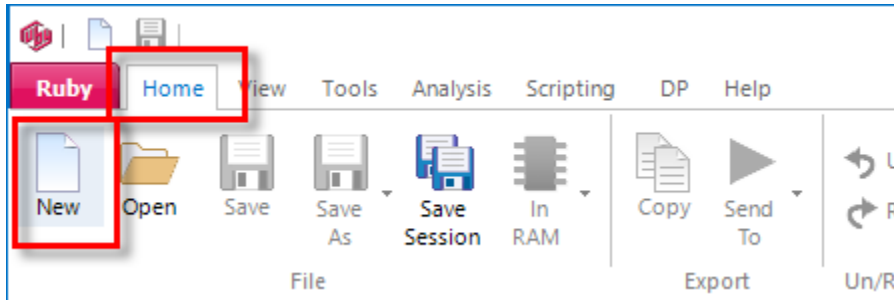
- Maximise the window

- Use the arrow up/down keys to show the slideshow reports in a single window

You can use the right mouse menu *Specification* to see how each report is specified.

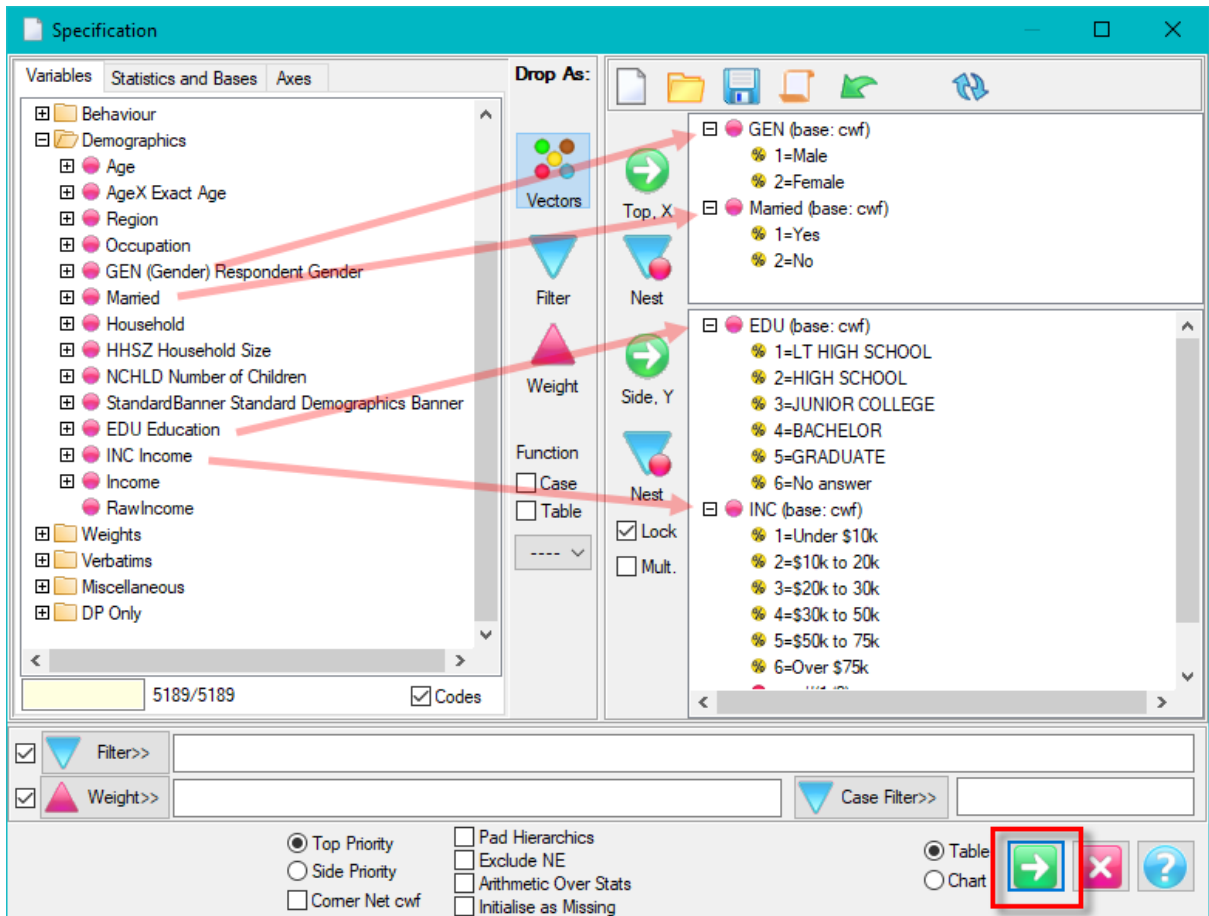
To generate a table

- Home | New



- Drag variables to the Top and Side trees

- Click the Run button 



- Right click Insert Bases

SReport1

**Top: Respondent Gender, Married**  
**Side: Education, Income**

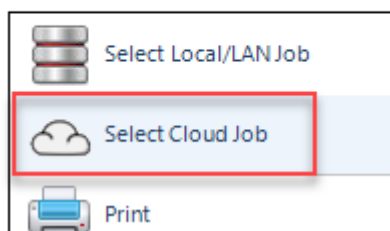
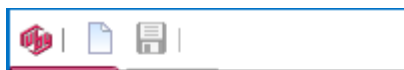
Frequencies Column Percents		Respondent Gender			
		Cases WF	Male	Female	Cases W
Education	Cases WF	10,000	4,985	5,015	10,000
	LT HIGH SCHOOL	1,448	725 15%	723 14%	1,448
	HIGH SCHOOL	5,353	2		53
	JUNIOR COLLEGE	736			6
	BACHELOR	1,604			04
	GRADUATE	839			9

Context menu options: Specification F2, Insert Bases, Remove Bases, Clone, Show All, Summary

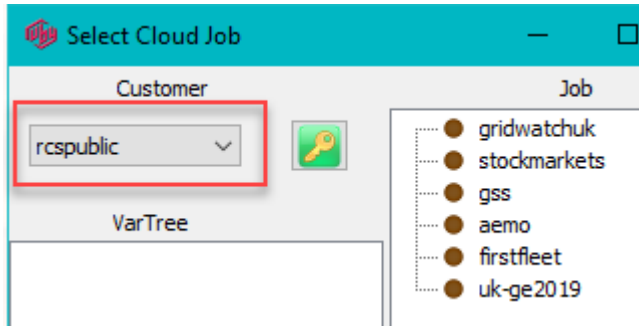
## CLOUD JOBS

For real jobs we go to the Cloud.

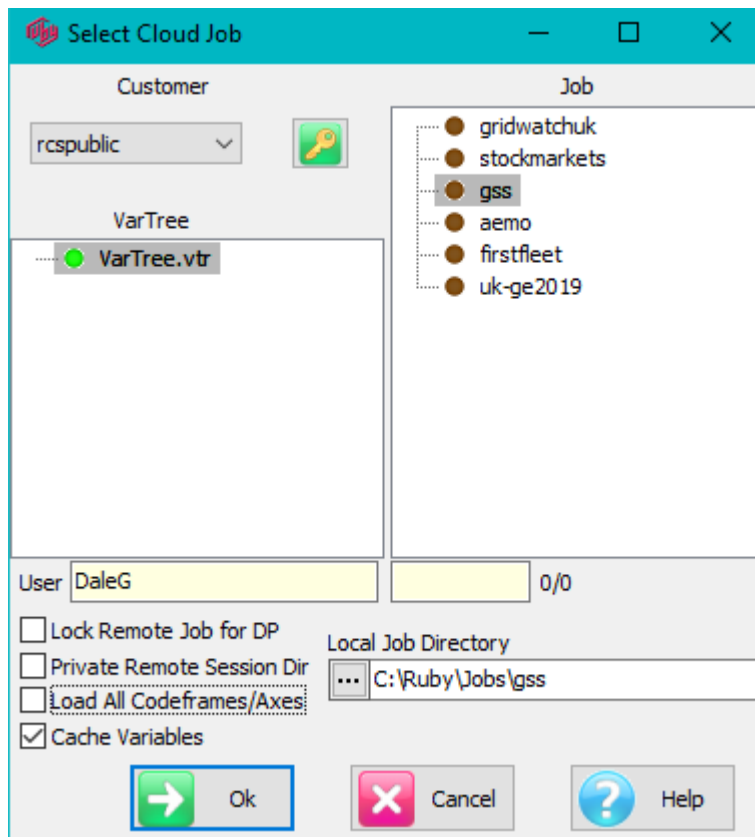
- Ruby Tab button then *Select Cloud job*



- Confirm the Customer is rcspublic



- Select *gss* and check Cache Variables (improves performance by downloading only once, as required)



This is the General Social Survey from 1972 to 2018. See <http://www.gss.norc.org/>

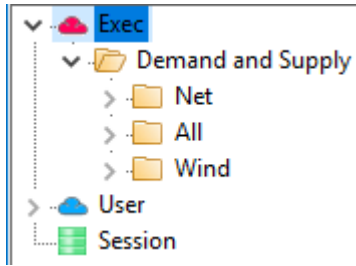
The case data was downloaded from <http://www.gss.norc.org/get-the-data/spss>

The 32 SAV files were then imported to Ruby as a tracking job.

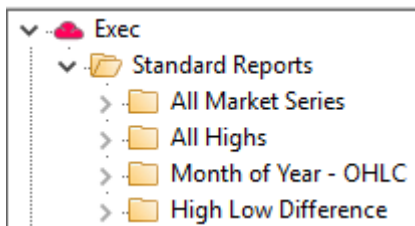
The other public jobs are intended to show how Ruby can be used to analyse non-survey data – totals and averages rather than headcounts and percentages – and how to handle huge data sets.

Gridwatchuk: The UK electricity supply sources and demand at 5 minute intervals since May2011

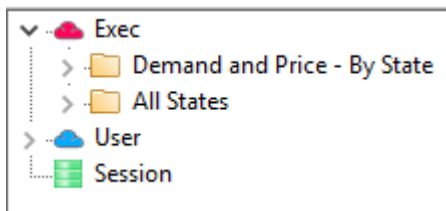




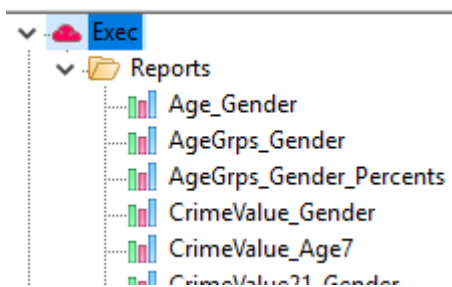
Stockmarkets: Major stock indices, daily from 1965 - tricky data because the various exchanges take days off (are out of field) at different times for calendar and cultural reasons.



AEMO: Australian Energy Market Operator - the eastern states electricity grid price and demand - half-hourly data from 1999

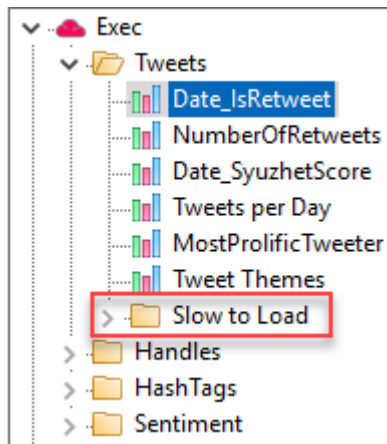


First Fleet: historical database of the First Fleet convicts (this is a small job)



UK-GE2019: The UK General Election as viewed through Twitter for the last five campaign days, around 60,000 tweets (including retweets) per day.

Reports in folders "Slow to Load" may take a minute or so to render for display - this is because they have the 100,000 unique tweets as the side axis, making enormous tables.



The public cloud jobs will remain available after expiry of your trial period.